



# Smart Retail Solutions



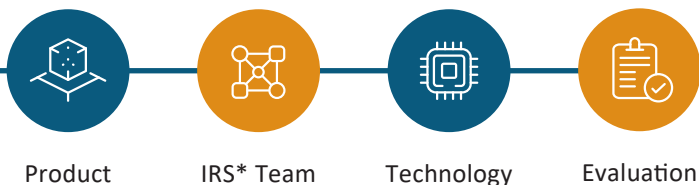
[www.axiomtek.com](http://www.axiomtek.com)

# Smart Retail Solutions

## Enhancing the Shopping Experience with Innovation

In the era of digital transformation, Axiomtek empowers businesses to craft unforgettable shopping experiences. With our cutting-edge, easy-to-deploy retail solutions, we help bridge the gap between seamless online interactions and dynamic in-store engagement. From eye-catching in-store signage to interactive kiosks, our innovations enable retailers to reduce costs, drive sales, and build meaningful connections with their customers.

### Axiomtek's Design-In Business Chart



- Accelerate Project Timelines with Modular Design
- Custom Modifications Based on Standard Products
- Dedicated Support from IRS Team

\*Intelligence Retail Solutions, IRS

### Our Advantages ▶

Innovative, feature-rich, and seamlessly deployable retail computing solutions

1

Value-Added Design-in Services to maximize customer satisfaction

2

Flexible modular designs with swift customization capabilities

3

Premium-quality, reliable products for exceptional durability

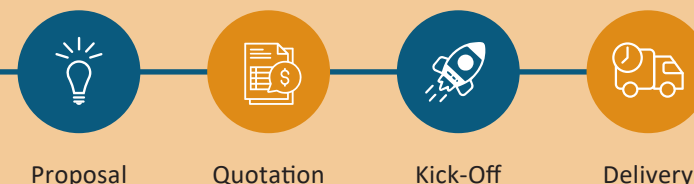
4

Comprehensive system integration expertise

5

Over a decade of proven experience and deep knowledge in retail technologies

6



## Digital Signage Player Series



### DSP302

#### Fanless Palm-sized Digital Signage Player

- Intel® Celeron® processor N6210/J6413
- 4GB LPDDR4 onboard memory (8GB optional)
- 3 HDMI 2.0 with 4K resolution support
- 4 USB and 1GbE LAN
- Full-size PCIe Mini Card slot for Wi-Fi/Bluetooth/3G/4G
- M.2 Key M 2242 slot for SATA/PCIe



### DSP311 NEW

#### Palm-sized Digital Signage Player

- Intel® processor N97
- 1 DDR4 SO-DIMM, up to 16GB
- Dual HDMI 2.0 with 4K resolution support
- Dual GbE LAN



### DSP521 NEW

#### Fanless 4K Digital Signage Player

- 13th/12th gen Intel® Core™ processor
- 2 DDR4-3200 SO-DIMM, up to 64GB
- Dual HDMI 2.0 and dual DisplayPort 1.4 (DisplayPort++ supported)
- 1 GbE LAN and one 2.5GbE LAN
- 2 RS-232



Wayfinding Interactive Kiosk

Self-Service Ticketing Kiosk

## Retail Controller Series



### DSP810 NEW

#### POS System with Versatile I/O and Easy Maintenance

- LGA1151 socket 9th/8th Intel® Core™ processor
- Supports diverse I/O: COM, LAN, PoweredUSB cash drawer (RJ12), HDMI, and DisplayPort
- Smart fan with easy replacement
- Filter design for simplified maintenance
- Supports 2 swappable 2.5" SATA drives



### DSP801 NEW

#### Advanced Kiosk PC with Extensive I/O and TPM Security

- LGA1700 socket 13th/12th gen Intel® Core™ processor
- 2 DDR4-3200 SO-DIMM, up to 64GB
- 12 USB and 6 COM
- Supports TPM 2.0
- Supports one 2.5" SATA drive



### DSP802 NEW

#### Rugged Fanless Outdoor Kiosk PC

- Intel® Celeron® processor J6412
- 1 DDR4-3200 SO-DIMM, up to 32GB
- 6 USB, 4 COM, and 2 HDMI (dual display)
- Dual 2.5GbE LAN
- Operating temperature range: -20°C to +60°C

# Intel® Smart Display Module (Intel® SDM) Series

## SDM520L NEW



### Intel® Smart Display Module Large (Intel® SDM-L)

- Intel® Core™ Ultra 7/5 processors (Meteor Lake-U)
- 2 DDR5 SO-DIMM, up to 96GB
- Supports Intel vPro® platform (135U and 165U)
- One 2.5GbE LAN with optional PoE module support
- One 4K HDMI input for Audio Visual market and one 8K HDMI output
- Supports dTPM2.0

## SDM510L



### Intel® Smart Display Module Large (Intel® SDM-L)

- 13th/12th gen Intel® Core™ i7/i5/i3 or Celeron® processor
- 2 DDR4-3200 SO-DIMM
- 3 HDMI, 4 USB, and one 2.5GbE LAN
- M.2 Key E 2230 slot for Wi-Fi/Bluetooth
- M.2 Key M 2242 slot for storage
- Supports Intel® OpenVINO™ and Intel vPro®

## SDM500L



### Intel® Smart Display Module Large (Intel® SDM-L)

- 8th gen Intel® Core™ i7/i5/i3 or Celeron® processor
- 2 DDR4-2400 SO-DIMM, up to 32GB
- 1 HDMI, 4 USB, and 1 GbE LAN
- M.2 Key E 2230 slot for Wi-Fi/Bluetooth
- M.2 Key M 2280 slot for storage
- M.2 Key B 2242 slot for expansion
- Supports Intel® AMT 12

## SDM300S



### Intel® Smart Display Module Small (Intel® SDM-S)

- Intel® Pentium® processor N4200 or Celeron® processor N3350
- 4GB LPDDR4 memory onboard (8GB optional)
- 64GB eMMC onboard (32GB optional)
- 2 USB and 1 GbE LAN
- M.2 Key E 2230 slot for Wi-Fi/Bluetooth
- Small form factor design

## SDM310S



### Intel® Smart Display Module Small (Intel® SDM-S)

- Intel® Celeron® processor J6412
- 4GB LPDDR4 memory onboard (8GB optional)
- 64GB eMMC onboard (128GB optional)
- Supports two 4K displays
- 2 Type-C (USB 3.2) and 1 GbE LAN
- Small form factor design



## Interactive Touch Computer Series



- Swappable SDM CPU card for easy upgrades and maintenance
- Aluminum bezel with a 16:9 aspect ratio
- Wide-view 10-point PCAP touchscreen
- Add-on modules: camera, RFID reader, barcode scanner, LED lightbar, and keypad
- Supports countertop, wall-mount, and floor stand installations

### ITC151

#### 15.6" HD LCD Slim Bezel Modular Panel PC

- 220 nits brightness
- Slim bezel with a thickness of 33.5 mm

### ITC211

#### 21.5" FHD LCD Slim Bezel Modular Panel PC

- 250 nits brightness
- Slim bezel with a thickness of 46.3 mm

### ITC241

#### 23.8" FHD LCD Slim Bezel Modular Panel PC

- 250 nits brightness
- Slim bezel with a thickness of 47.5 mm



## Self-Service Kiosk Series

### SSK724 (Matrix)

#### 15.6"/21.5" FHD Cash and Cashless Kiosk

- Distinctive LED light bars
- Flexible mounting options: countertop, floor stand, or extension rack
- Supports banknote acceptor and coin recycler
- High-speed barcode scanner
- Supports RFID and 2"/3" thermal printers
- Optional weight scale available



### SSK723

#### 21.5" FHD Cash and Cashless Kiosk

- Distinctive LED light bars
- Supports banknote acceptor and coin recycler
- Supports barcode scanner, RFID, and 2"/3" thermal printers



### SSK515 (CUBE)

#### 15.6" Full HD Kiosk

- Wide-view LCD display
- Super-slim design with 8.7 cm in thickness
- Swappable Intel® SDM processor
- Features a 256-color LED lightbar
- Peripheral module design: RFID scanner, barcode reader, thermal printer, and EFT holder



### SSK722

#### 21.5" Customization Kiosk

- Dual wide-view FHD 10-point PCAP touchscreens
- Cash payment: bill recycler
- Cashless payment: barcode scanner, RFID reader, EFT holder, and thermal printer
- Supports floor stand and countertop
- Customization of ID, screen, cash, and cashless module design



# Design-In Service

## Elevate Your Smart Retail Business with Axiomtek's Design-In Service

Axiomtek's Design-In Service delivers customized systems and boards designed to meet your specific application needs. By leveraging advanced technologies, we offer diverse customization options, manufacturing flexibility, and comprehensive global technical and logistical support.

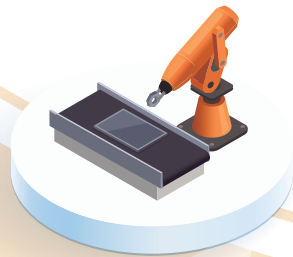
## Axiomtek's Business Models for Channel Partner Collaboration

### Channel-Managed Design-In Business:

We provide tailored products and services, conduct regular technical training, and maintain an applications engineering team dedicated to assisting customers.

### Partnering with Axiomtek to Approach Customers:

Axiomtek leads the way in clarifying specifications and recommending optimal solutions while managing all technical inquiries, ensuring a seamless customer experience.



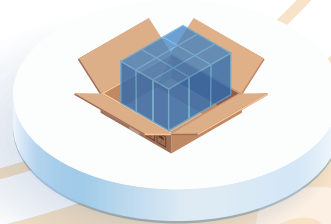
### ► Design

- Customization Based on Standard Products
- Baseboard and Application Board Design



### ► Row Material

- Common Parts Readiness
- Emphasis on New Parts for Revision



### ► Sample Delivery

- Efficient PCB Production and Fast-tracking PCBA Process
- Utilization of Popular Models



### ► Mass Production

- Accelerated Time-to-Market
- Customized ODM Process
- Global Service Coverage



### ► Validation

- Key Differences Validation
- ESD Pre-scan Service for Boards to Systems



## ASIA

### Axiomtek Co., Ltd (HQ)

8F., No.55, Nanxing Road, Xizhi District,  
New Taipei City 221, Taiwan

T/ +886-2-8646-2111

F/ +886-2-8646-2555

E/ [info@axiomtek.com.tw](mailto:info@axiomtek.com.tw)

### Axiomtek Technology (Shenzhen) Co., Ltd.

Unit GH, 6F, Building 7 (Block B), Baoning  
Science and Technology Park, Longhua Street,  
Qinghu Community, Qinghu Village, Longhua  
District, Shenzhen China

T/ +86-0755-66865899

F/ +86-0755-66863068

E/ [axcn@axiomtek.com.cn](mailto:axcn@axiomtek.com.cn)

### Axiomtek (Malaysia) Sdn. Bhd.

No 16, Jalan Tandang 51/205A,  
Seksyen 51, 46050 Petaling Jaya,  
Selangor, Malaysia

T/ +603-77731203

T/ +603-77724403

E/ [info@axiomtek.com.my](mailto:info@axiomtek.com.my)

### Axiomtek (Thailand) Co., Ltd.

7/17 Moo 6, Tumbol Banmai,  
Amphur Pakkret, Nonthaburi,  
Thailand 11120

T/ +662-573-4725

F/ +662-573-4726

E/ [sales@axiomtek.co.th](mailto:sales@axiomtek.co.th)

## USA

### Axiomtek (U.S. HQ)

18138 Rowland Street, City of Industry, CA  
91748, USA

T/ +1-626-581-3232

F/ +1-626-581-3552

E/ [info@axiomtek.com](mailto:info@axiomtek.com)  
[sales@axiomtek.com](mailto:sales@axiomtek.com)

### Regional Sales Office

Western Region ext. 116  
Northeast/Southeast Region ext. 123  
North Central Region ext. 189

T/ +1-626-581-3232

### Axiomtek Systems

300 Griffin Brook Drive, Methuen,  
MA 01844, USA

T/ +1-978-258-0108

## EU

### Axiomtek Deutschland GmbH

Elisabeth-Selbert Strasse 21a  
40764 Langenfeld, Germany

T/ +49-2173-399360

E/ [welcome@axiomtek.de](mailto:welcome@axiomtek.de)

### Axiomtek UK Limited

Peter House, Oxford Street,  
Greater Manchester, M1 5AN

T/ +44(0)1612093680

E/ [info@axiomtek.co.uk](mailto:info@axiomtek.co.uk)

### Axiomtek ITALIA S.r.l.

Via Pavia, 21, 20835 Muggiò (MB), Italy

T/ +39-02-664299.1 r.a.

E/ [info@axiomtek.it](mailto:info@axiomtek.it)



V558 E982412006